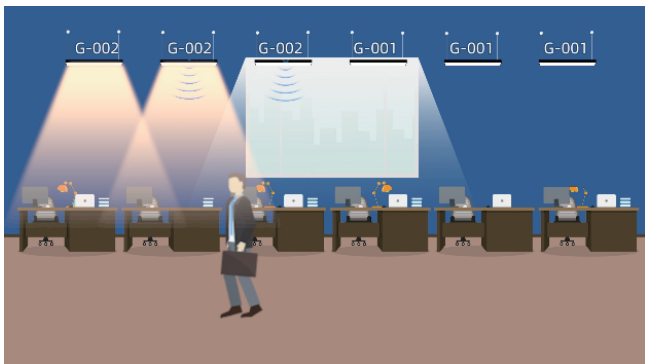
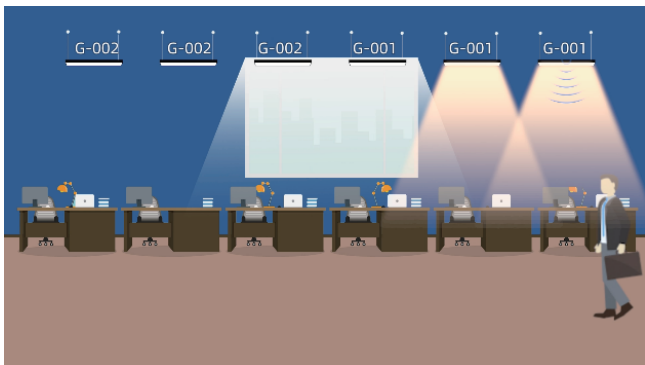


Smart LED Lighting



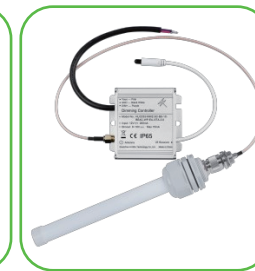
Smart Sensor



Remote



Gateway



Bridge + Antenna



Control Panel

The smart lamps are embedded with motion sensor and daylight sensor, using a remote control, they has the inborn advantages like long transmission distance, multiple channels and mesh network. Users can set grouping and parameters very fast and convenient. by adopting the standard ZigBee technology. For example, Users can set the sensor parameters of one group or individual lamp with one button, and change lamp brightness. In one group, the motion sensors work together to control these grouped lamps, and the daylight sensors control the individual lamps on/off according to the ambient brightness. The smart serial include panel, linear light, tri-proof light, high bay, LED tube. This kind of smart lamps can be used for industrial and commercial area, example offices, warehouses, factories, parking and others.

- | | | | |
|----|---|---------------------------------------|----|
| 01 | 2 Way Communication | Standard HA (Home Assistant) Protocol | 10 |
| 02 | Area & Scene Control | End-to-End Transmission Encryption | 09 |
| 03 | Scheduled Control / Timer Control | Support for Passive Wireless Switches | 08 |
| 04 | Account Management | Multi-Gateway Support | 07 |
| 05 | Energy Consumption & Failure Statistics | OTA (Over-the-Air) Updates | 06 |



Smart LED Linear Light 20W/36W/40W Up To 100~120LM/W



ZigBee Mesh
Network Control



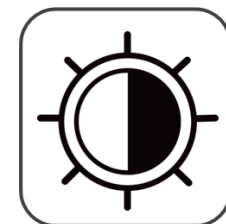
Motion Sensor



Remote Control



Zoning & Grouping



Daylight Sensor



On/Off Control

LED Linear lights are widely used indoor

Commonly used in various settings such as high-end office buildings, schools, hospitals, exhibition halls, airports, supermarkets, and department stores

Smart LED Linear Light

Features

- ZigBee mesh network smart controls
- Default with Constant Daylight and Motion sensors.
- Easy Grouping without Gateway via Smart Remote Control
- Automatic ON/OFF or Dimming Functions with smart sensing (Daylight, Motion) for maximum energy saving
- Color Temperature options with 4000K, 5000K, 5700K or 6500K
- Power Field available with power between 20W, 36W and 40W
- 50% less power consumption than traditional light sources
- Lowest maintain cost

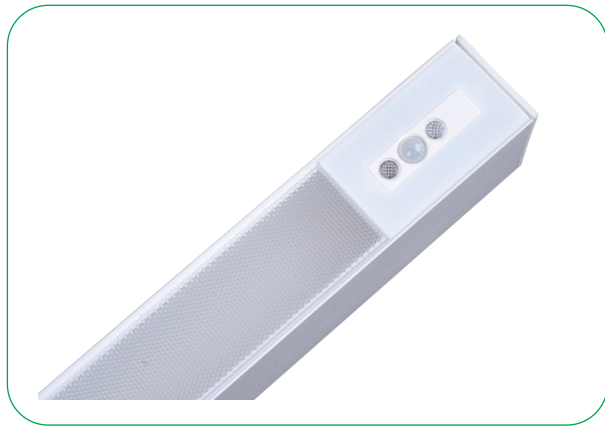
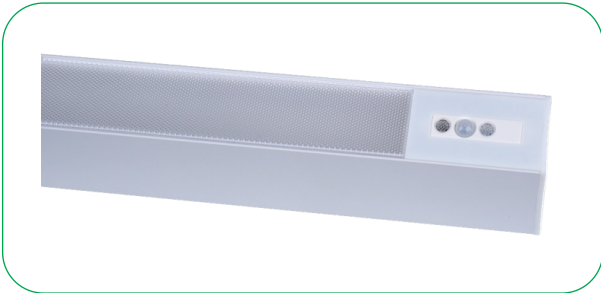
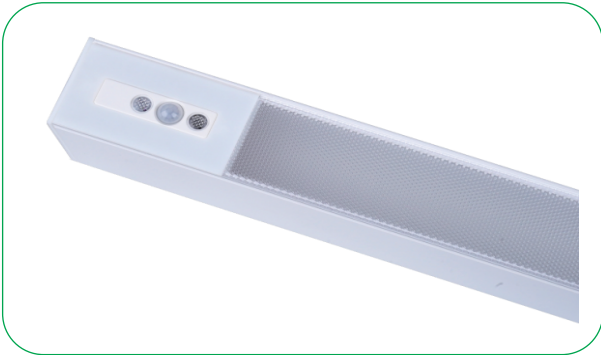
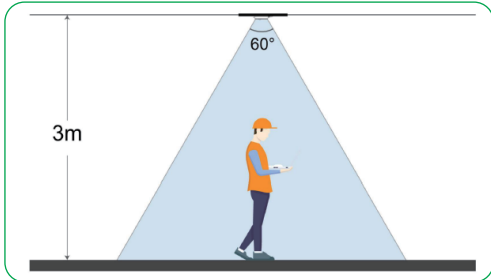
Smart Modules

- ZigBee Module
- Microwave Motion Sensor Module
- Infrared Daylight Sensor Module

Sensor Parameters

- Sensing Angle 60°
- Sensing Distance 3 m
- Light Sensing Range 0~8000 Lux(Constant Daylight)
- Remote Control Distance 10 m

Sensor Angle





Smart LED Linear Light

Product Data

●LED Type/Band	Lumileds2835
●Light efficiency	100lm/W,120lm/W
●CCT/CRI	4000K/ 5000K/ 5700K/6500K, ≥80
●LED Lifespan	> 50000h
●Power Supply	BOKE,Non-Isolated, 50/60Hz, THD < 15%
●Driver efficiency/Power Factor	92% / > 0.90
●Warranty	5 Years Warranty
●Certificate	CE, RoHS
●Input voltage	200~240 Vac

Product Data

●Beam Angle	70°
●Surge Protection	2KV
●Ingress protection code	IP40
●Operating Temperature	-20℃ to +40℃

Controls and Dimming

●Dimmable	Dimmable
●Intelligent Control	ZigBee / Dimming / Infrared Daylight / Microwave Motion Sensor

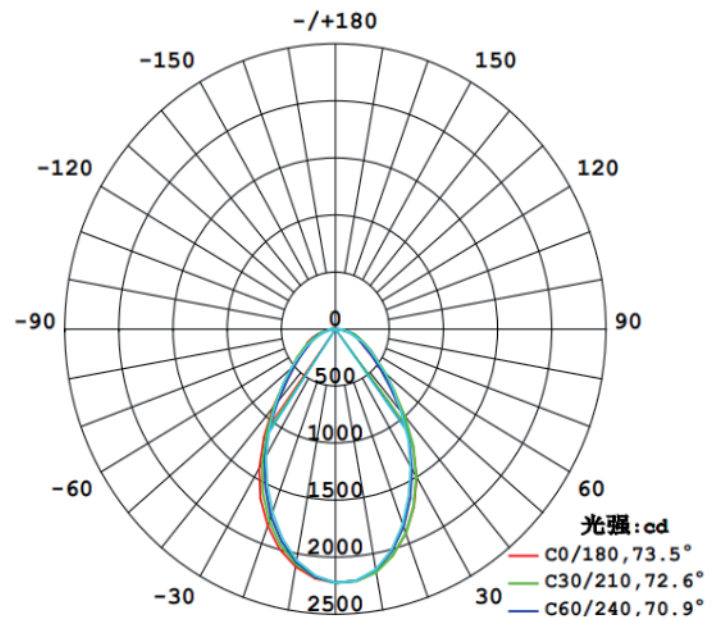
Mechanical

●Structure Material	Die-cast aluminum
●Material Glass	PC
●Fixture Color	White/Black
●Finish Material Lens	Powder coated

<https://www.honsentider.com/>

Smart LED High Bay Light

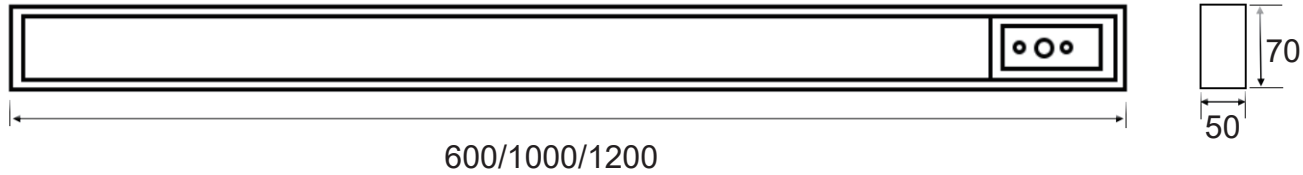
Light Distribution Curve



Average Beam Angle(50%): 70 Deg

Drawing

Unit:mm



Drawing

Model Number	Luminaire Net Weight	Packing Info	Dimension(outer carton) (mm)	GW(Outer carton)
L060	0.99kg	18pcs/Carton	712*470*330	19KG
L100	1.65kg	12pcs/Carton	1112*470*225	21KG
L120	1.78kg	9pcs/Carton	1312*240*340	17KG