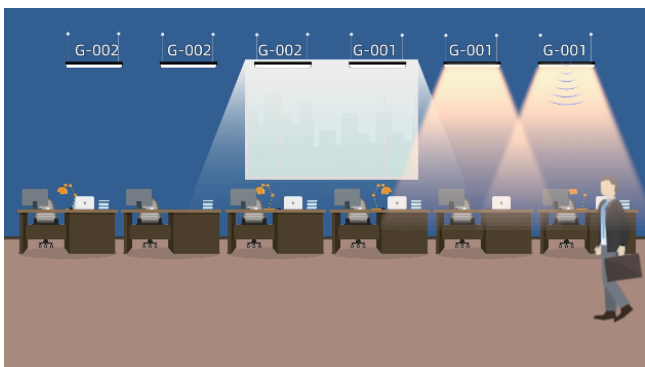


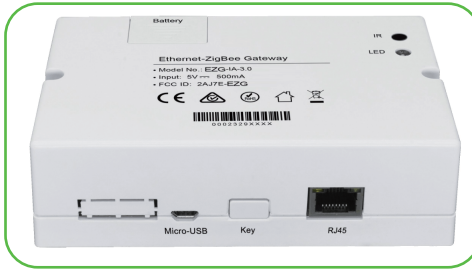
Smart LED Lighting



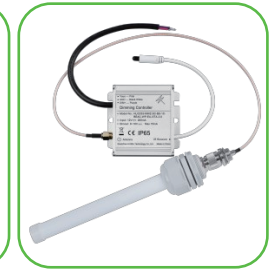
Smart Sensor



Remote



Gateway



Bridge + Antenna



Control Panel

The smart lamps are embedded with motion sensor and daylight sensor, using a remote control, they has the inborn advantages like long transmission distance, multiple channels and mesh network. Users can set grouping and parameters very fast and convenient. by adopting the standard ZigBee technology. For example, Users can set the sensor parameters of one group or individual lamp with one button, and change lamp brightness. In one group, the motion sensors work together to control these grouped lamps, and the daylight sensors control the individual lamps on/off according to the ambient brightness. The smart serial include panel, linear light, tri-proof light, high bay, LED tube. This kind of smart lamps can be used for industrial and commercial area, example offices, warehouses, factories, parking and others.

- | | | | |
|----|---|---------------------------------------|----|
| 01 | 2 Way Communication | Standard HA (Home Assistant) Protocol | 10 |
| 02 | Area & Scene Control | End-to-End Transmission Encryption | 09 |
| 03 | Scheduled Control / Timer Control | Support for Passive Wireless Switches | 08 |
| 04 | Account Management | Multi-Gateway Support | 07 |
| 05 | Energy Consumption & Failure Statistics | OTA (Over-the-Air) Updates | 06 |



Smart LED Tri-proof Light Up To 160LM/W | 40W



ZigBee Mesh Network Control



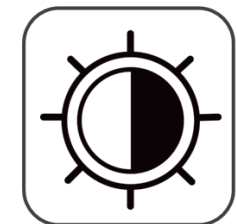
Motion Sensor



Remote Control



Zoning & Grouping



Daylight Sensor



On/Off Control

LED tri-proof lights are widely used indoor

Tri-proof lights are mainly used in indoor environments such as cold storage, supermarket, warehouse, workshop, tunnel, parking lot, sorting center whrer require fire and explosion protection, and can be used in humid semi-outdoor environments

Smart LED Tri-proof Light

Features

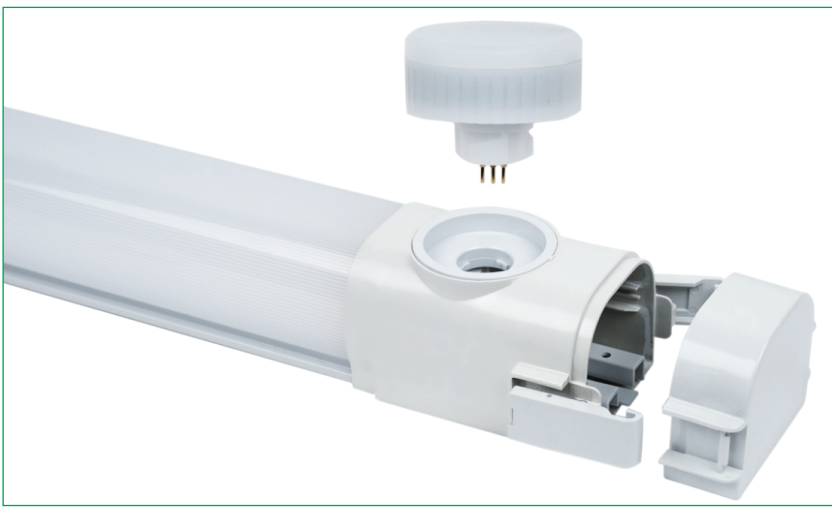
- External sensor optional Microwave Motion Sensor / Infrared Motion Sensor
- ZigBee mesh network smart controls
- Easy Grouping without Gateway via Smart Remote Control
- Single-ended or double-ended power supply is optional, and double-ended powered lamps can be cascaded
- Automatic ON/OFF or Dimming Functions with smart sensing (Daylight, Motion) for maximum energy saving
- Color Temperature options with 4000K, 5000K, 6000K by DIP switch
- IK08 mechanical structure impact protection
- IP65 protection grade
- Power is optional by DIP switch
- Efficiency up to 160 lm/W
- Lowest maintain cost
- 50% less power consumption than traditional light sources

Smart Modules

- ZigBee Module
- Microwave Motion Sensor or PIR Motion Sensor Module
- Infrared Daylight Sensor Module

Sensor Parameters (MID) & (PID)

- Sensing Angle 120° & 7.5°
- Sensing Distance 6 m
- Light Sensing Range 0~2000 Lux(Infrared Daylight)
- Remote Control Distance 10 m



Smart LED Tri-proof Light

Product Data

- Light efficiency 160lm/W
- CCT/CRI 4000K/ 5000K/ 6000K(By DIP Switch), ≥80
- LED Lifespan > 50000h
- Power Supply Non-Isolated, 50/60Hz, THD < 10%
- Driver efficiency/Power Factor 91% / > 0.95
- Warranty 5 Years Warranty
- Certificate CE, RoHS
- Input voltage 200~240 Vac

Product Data

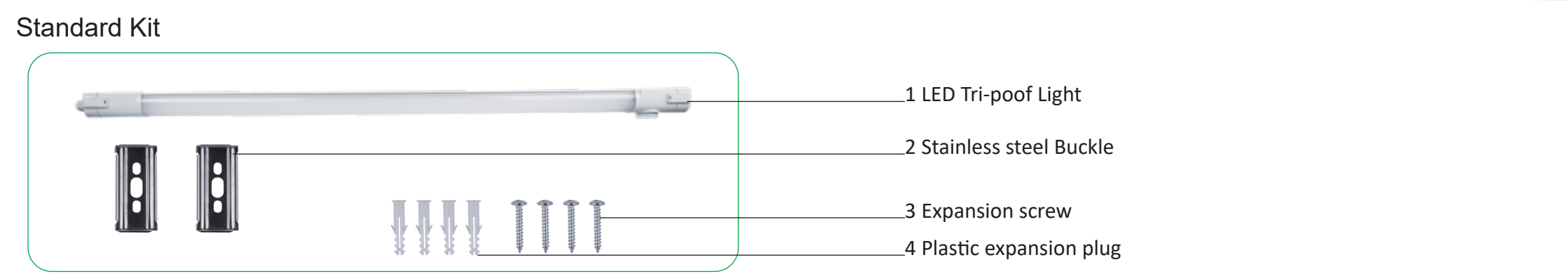
- Ingress Protection code IP IP65
- Surge Protection 3KV
- Mech. Impact Protection Code IK08
- Operating Temperature -20℃ to +50℃

Mechanical

- Structure Material PC
- Lens Material PC
- Fixture Color White

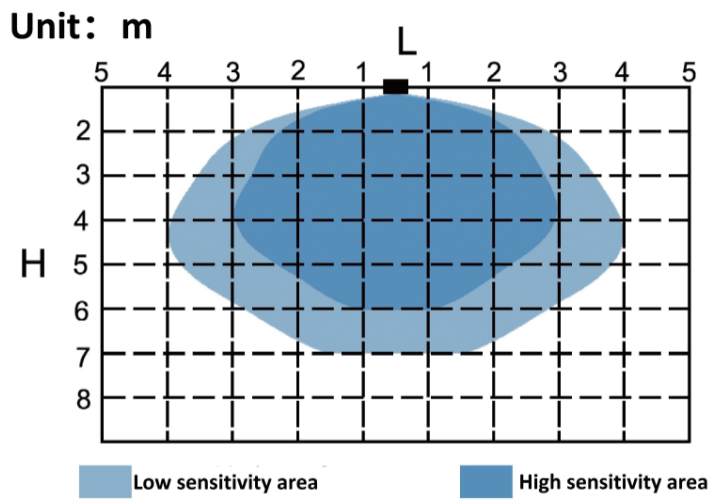
Controls and Dimming

- Dimmable Dimmable
- Intelligent Control ZigBee / Dimming / Infrared Daylight / Microwave Motion Sensor / PIR Motion Sensor

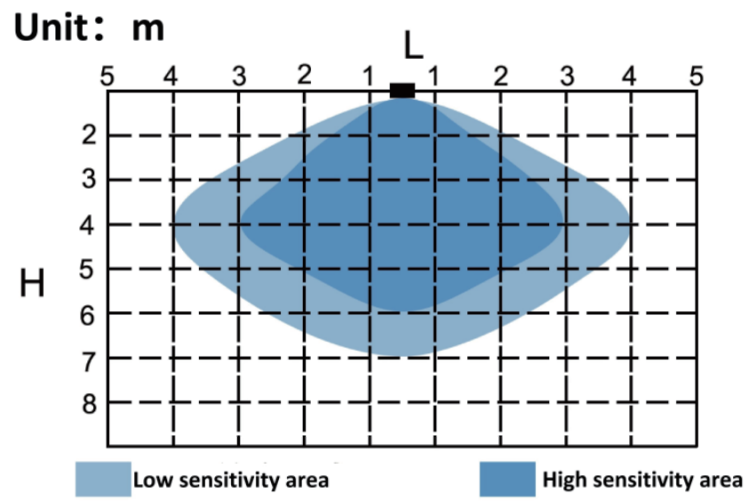


Smart LED Tri-proof Light

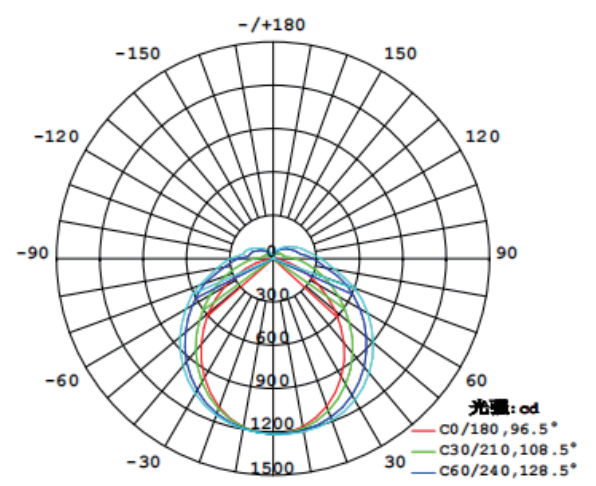
Sensing Angle(MID)



Sensing Angle(PID)

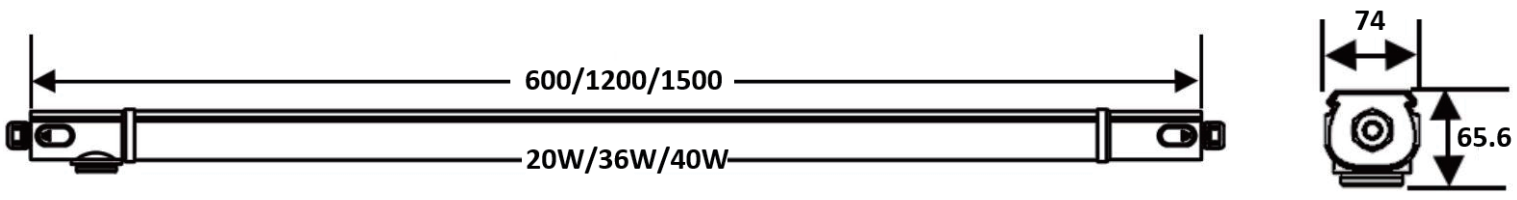


Light Distribution Curve



Dimensions:

Unit: mm



Package

Specified Length	N.W.: KG	Packing Info	Packing Size mm
600mm	0.62	8Pcs / Carton	705*405*185
1200mm	0.99	8Pcs / Carton	1305*405*185
1500mm	1.40	8Pcs / Carton	1605*405*185